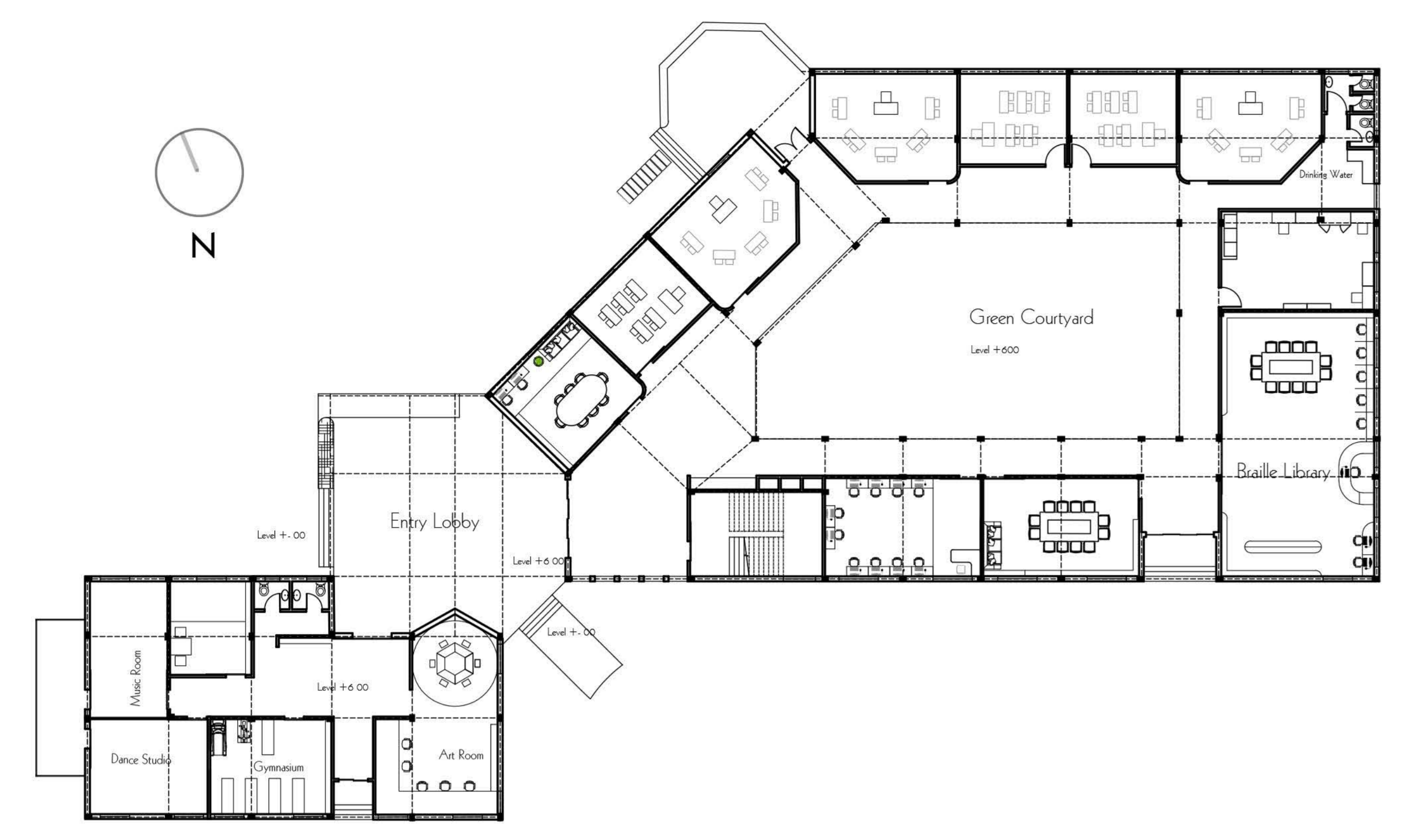
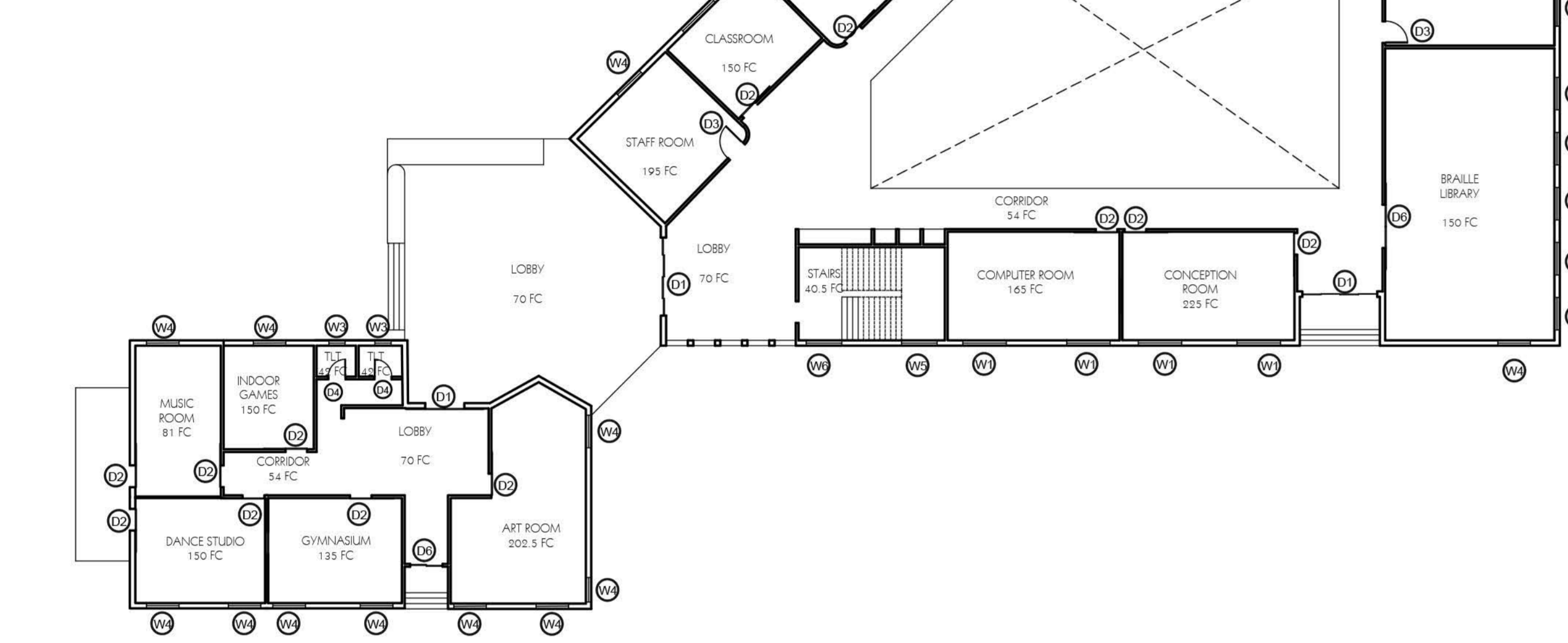


# SCHOOL AND RECREATIONAL CENTRE GROUND FLOOR PLAN



## ILLUMINATION LEVEL PLAN

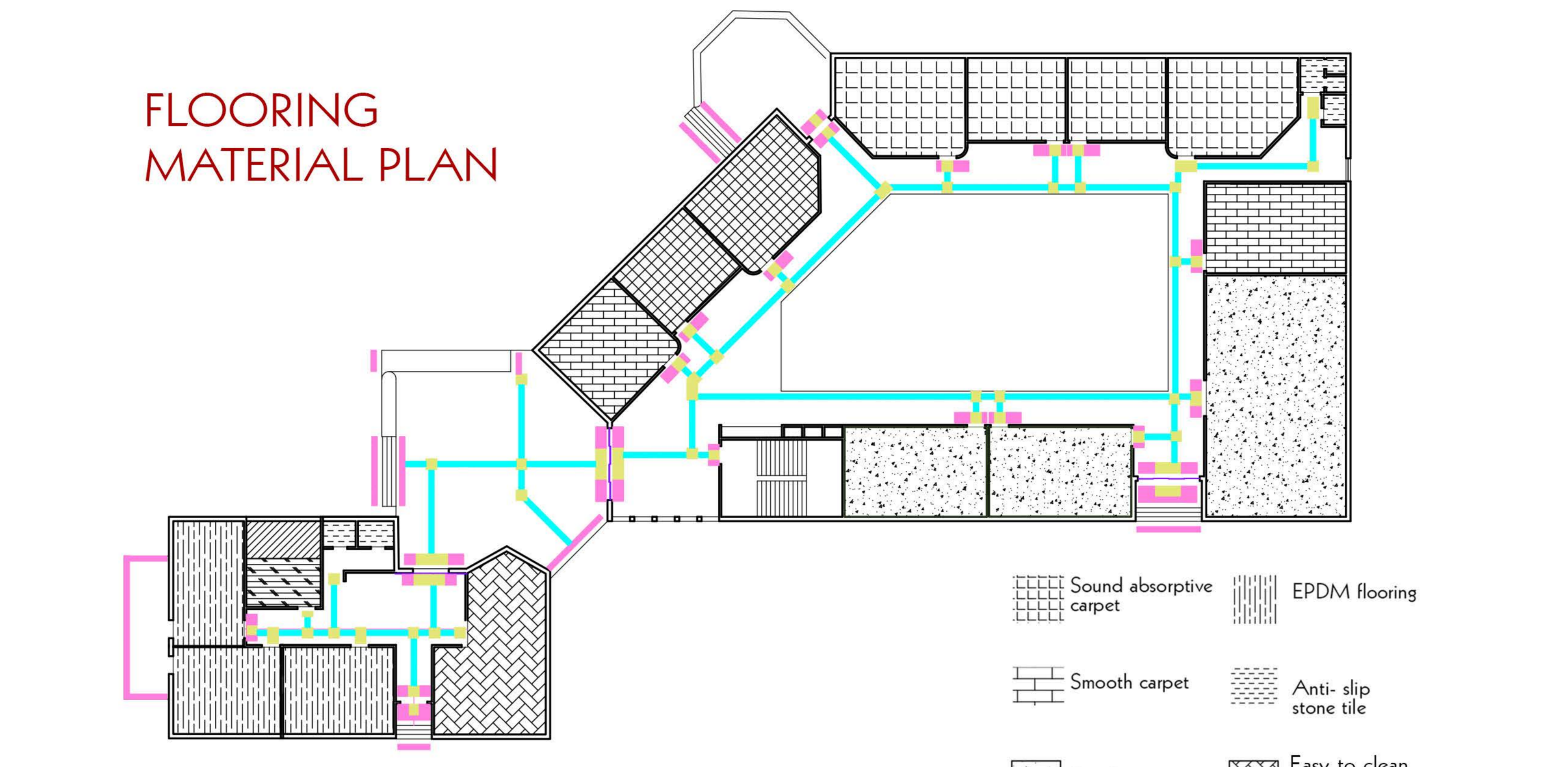


### CONCEPTS

- Two adjacent doors can be distinguished by opposite opening directions.
- Braille Signage to be provided for every room as per CPWD norms.
- Flexible spaces in music and dance are used.
- Swing doors are used in official context while sliding doors used for educational spaces.
- Wall inset helps in identification.
- Tactile Paving Norm Study.



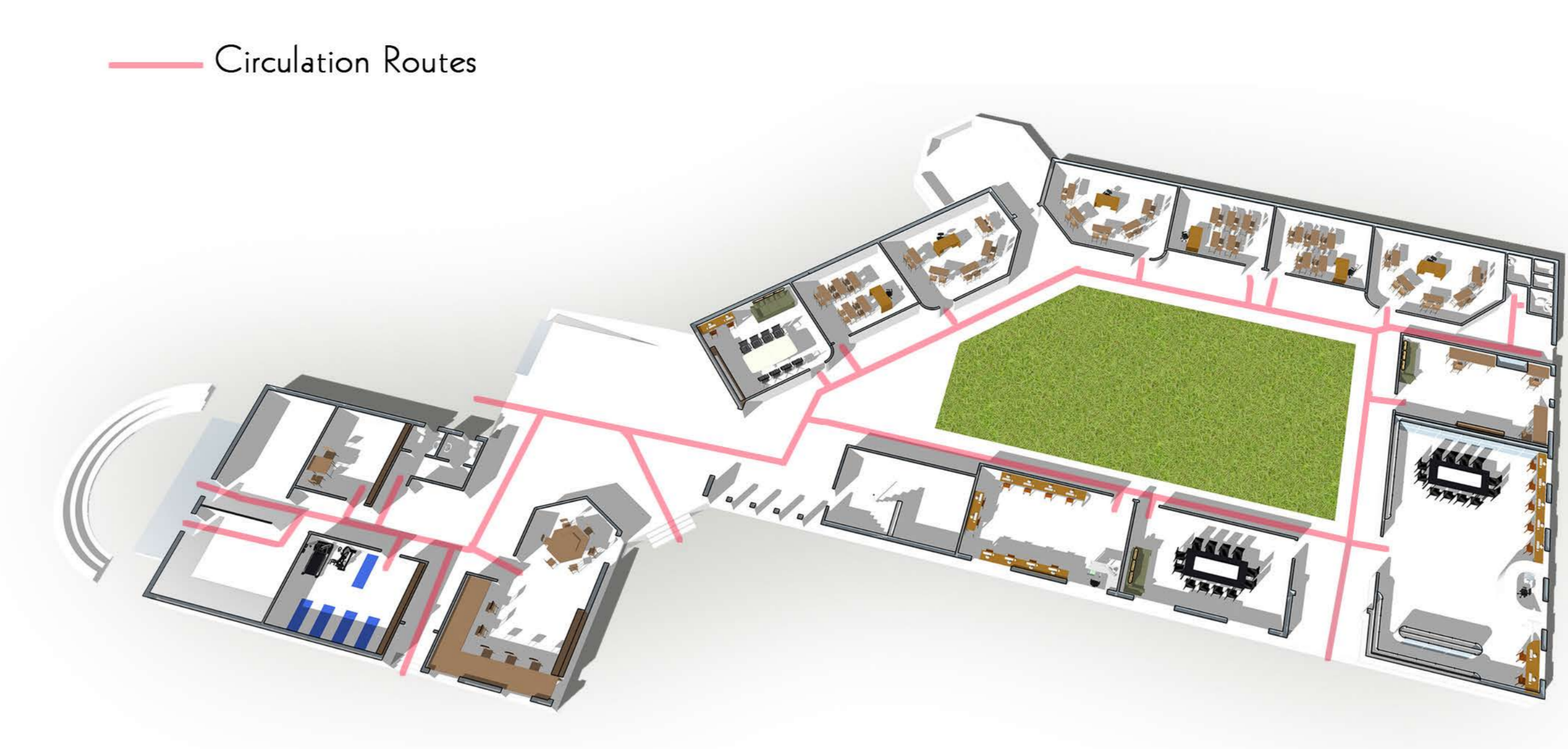
FRONT VIEW



## FLOORING MATERIAL PLAN

- Warning Tactile Paving Tiles
- Directional Tactile Paving Tiles
- Positional Tactile Paving Tiles

## EXPLODED VIEW



## SECTION A-A'

Scale 1:200



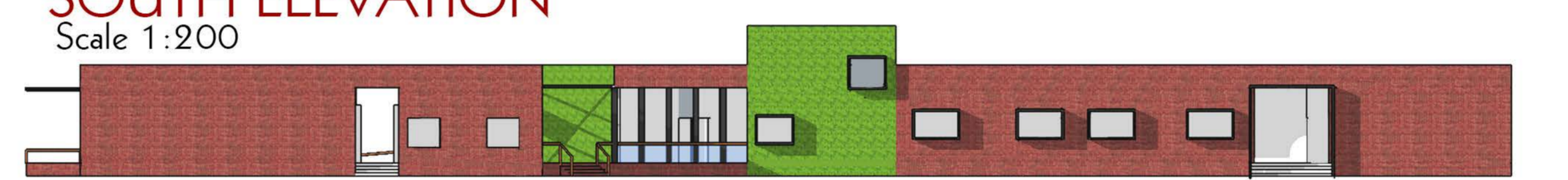
## SECTION B-B'

Scale 1:200



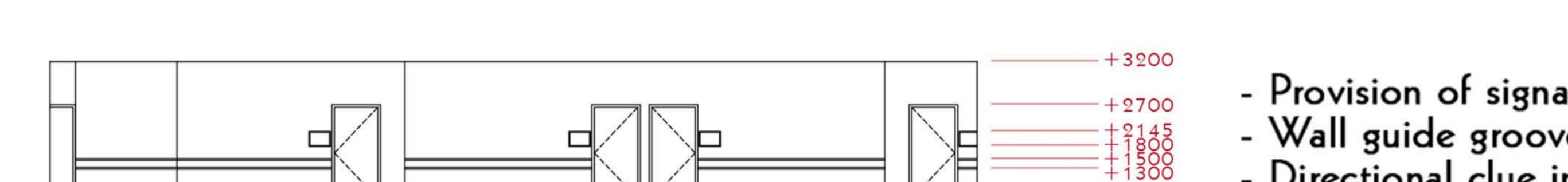
## WEST ELEVATION

Scale 1:200



## SOUTH ELEVATION

Scale 1:200



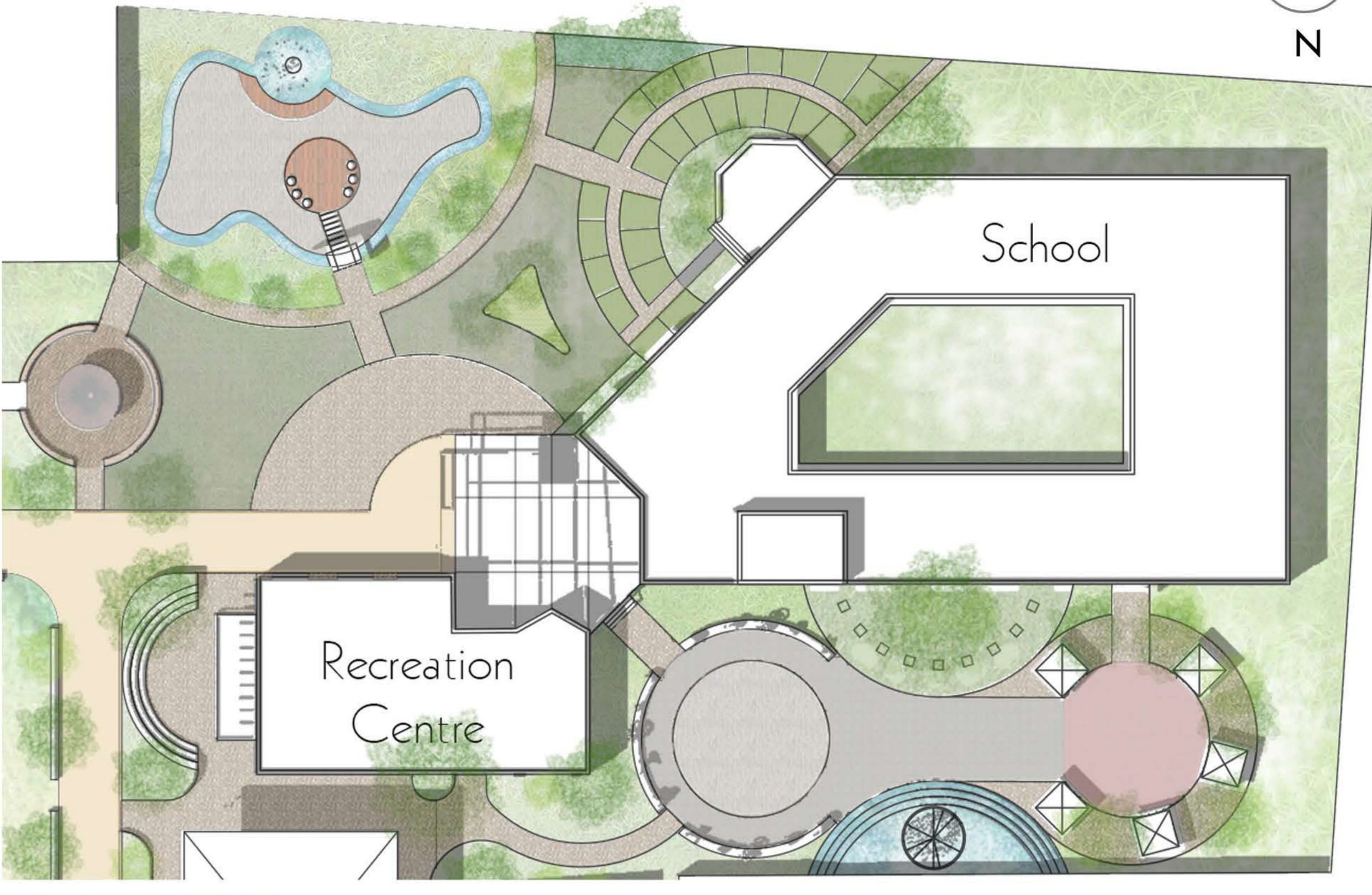
## INTERIOR ELEVATION

Scale 1:100

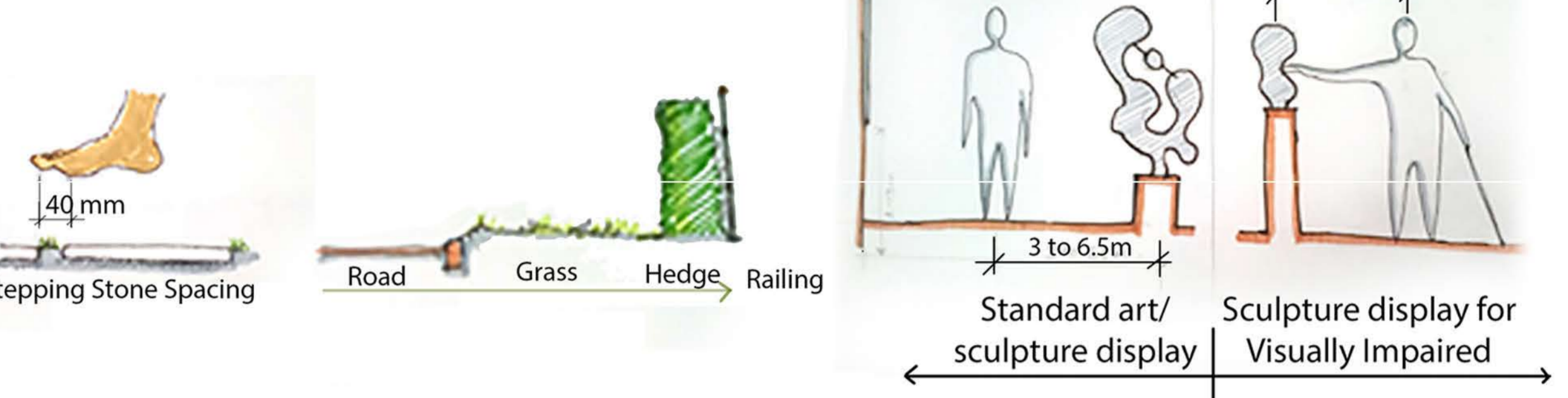


- Provision of signage
- Wall guide grooves at two heights
- Directional clue in swings of doors

## LANDSCAPE PLAN



## CONCEPTS



## BIRD'S EYE VIEW



## PERFORMANCE AREA



## SCULPTURE GARDEN



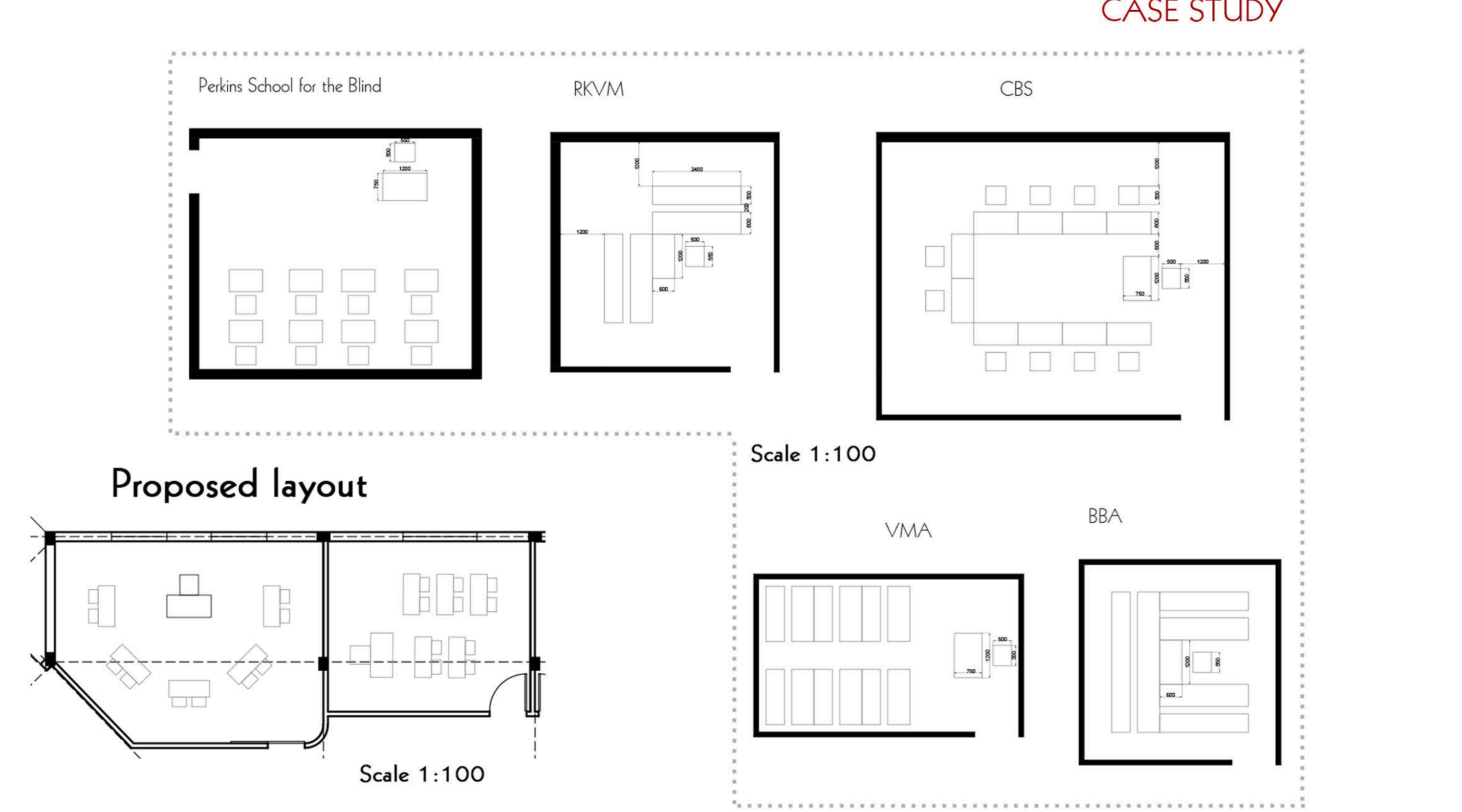
## MEDITATION AREA



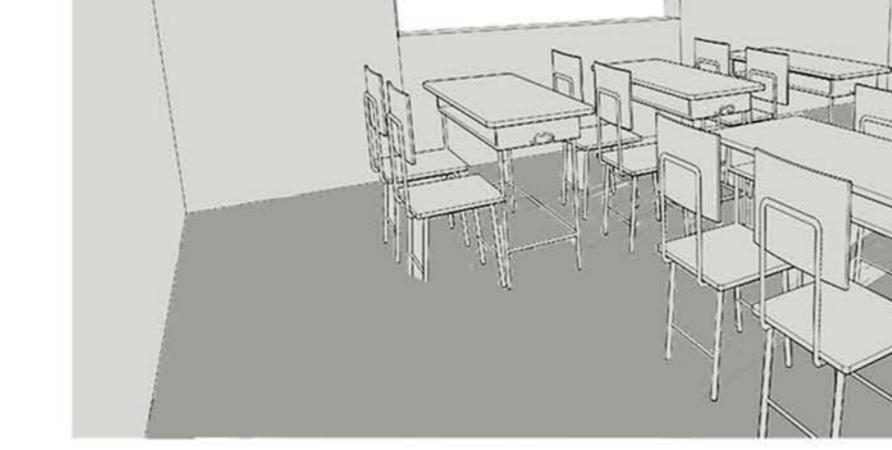
## ENTRY VIEW



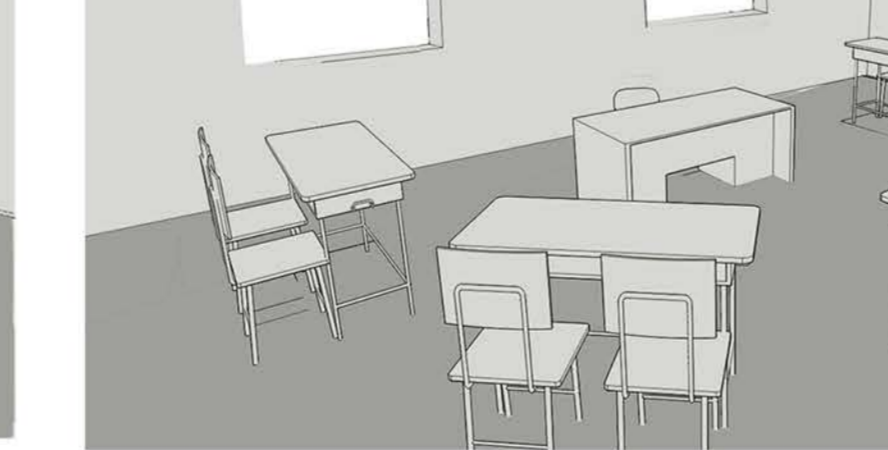
## CLASSROOMS



## Low Vision Classroom

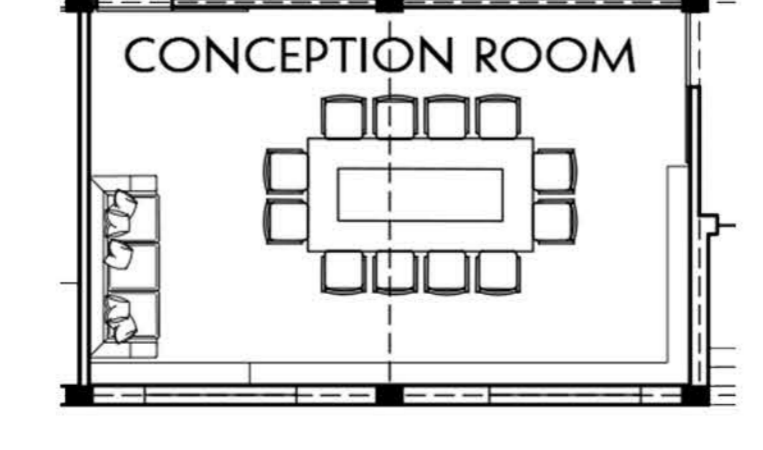


## Blind Classroom



## CONCEPTION ROOM

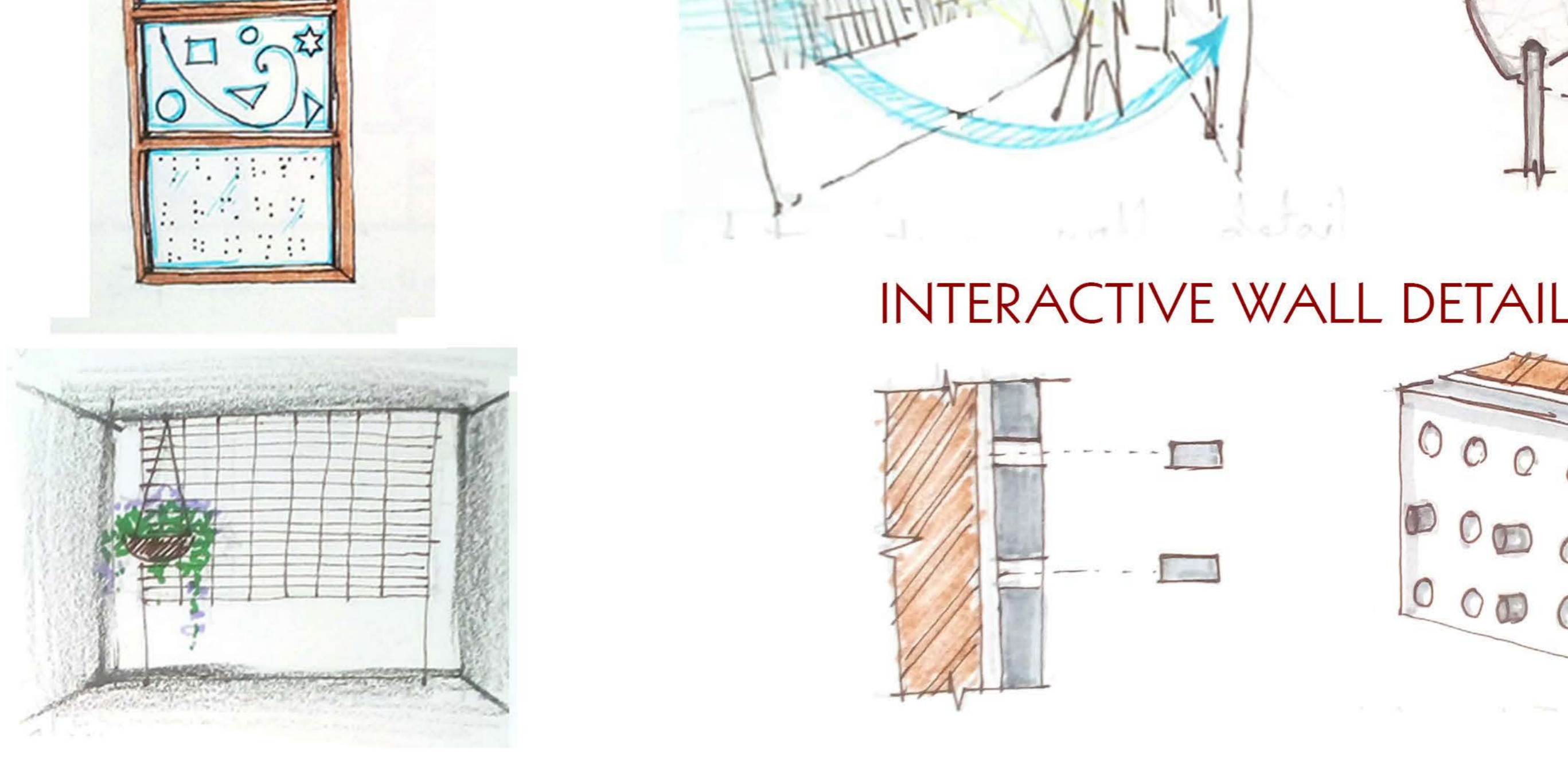
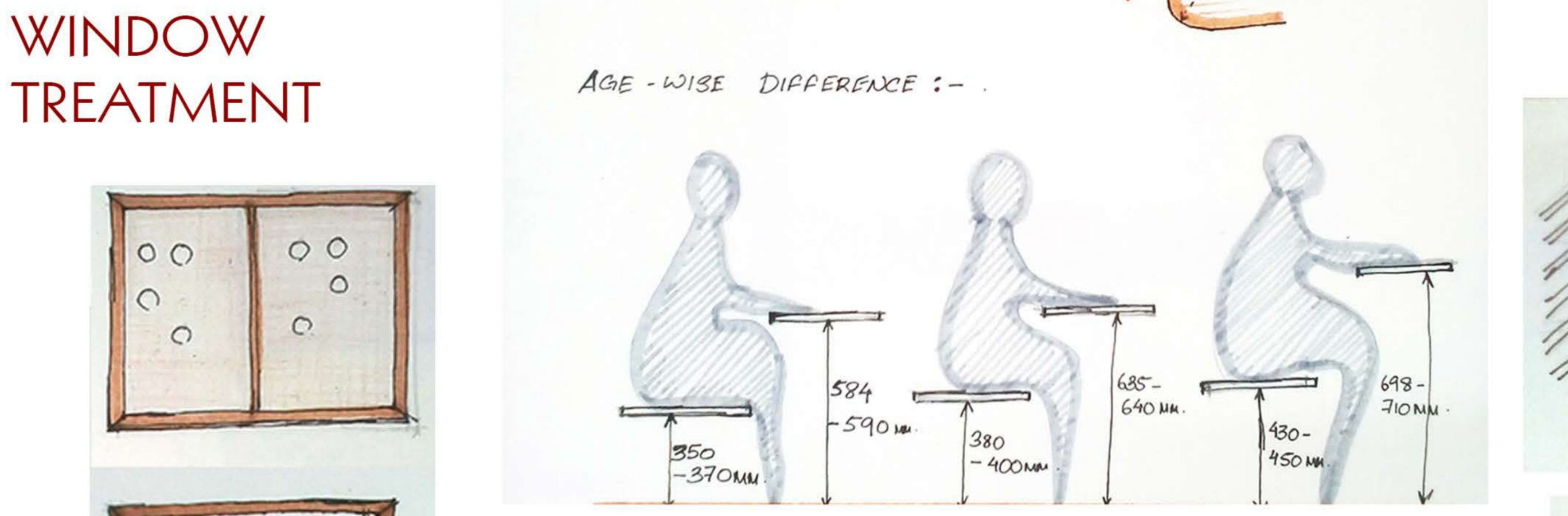
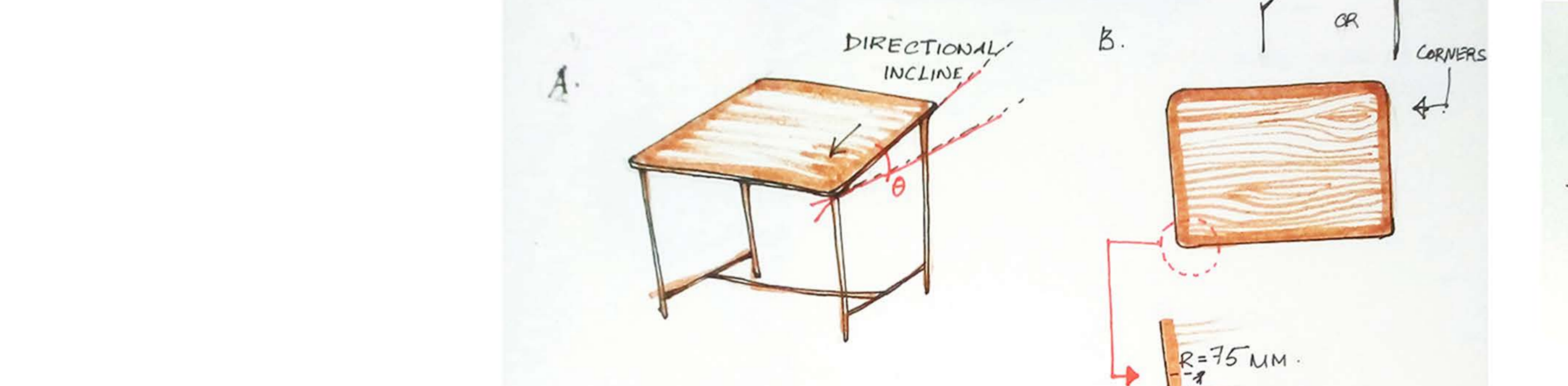
Scale 1:100



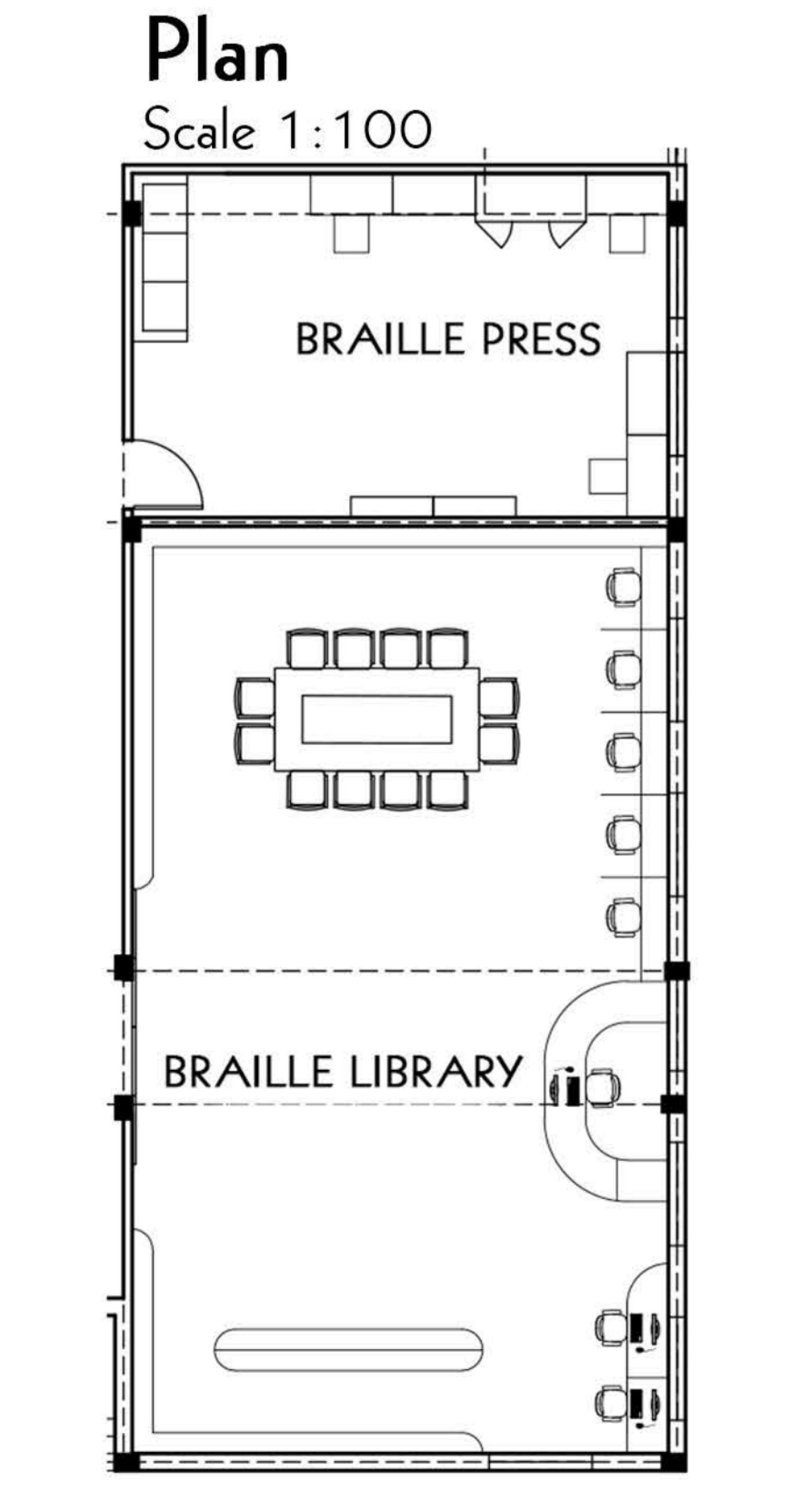
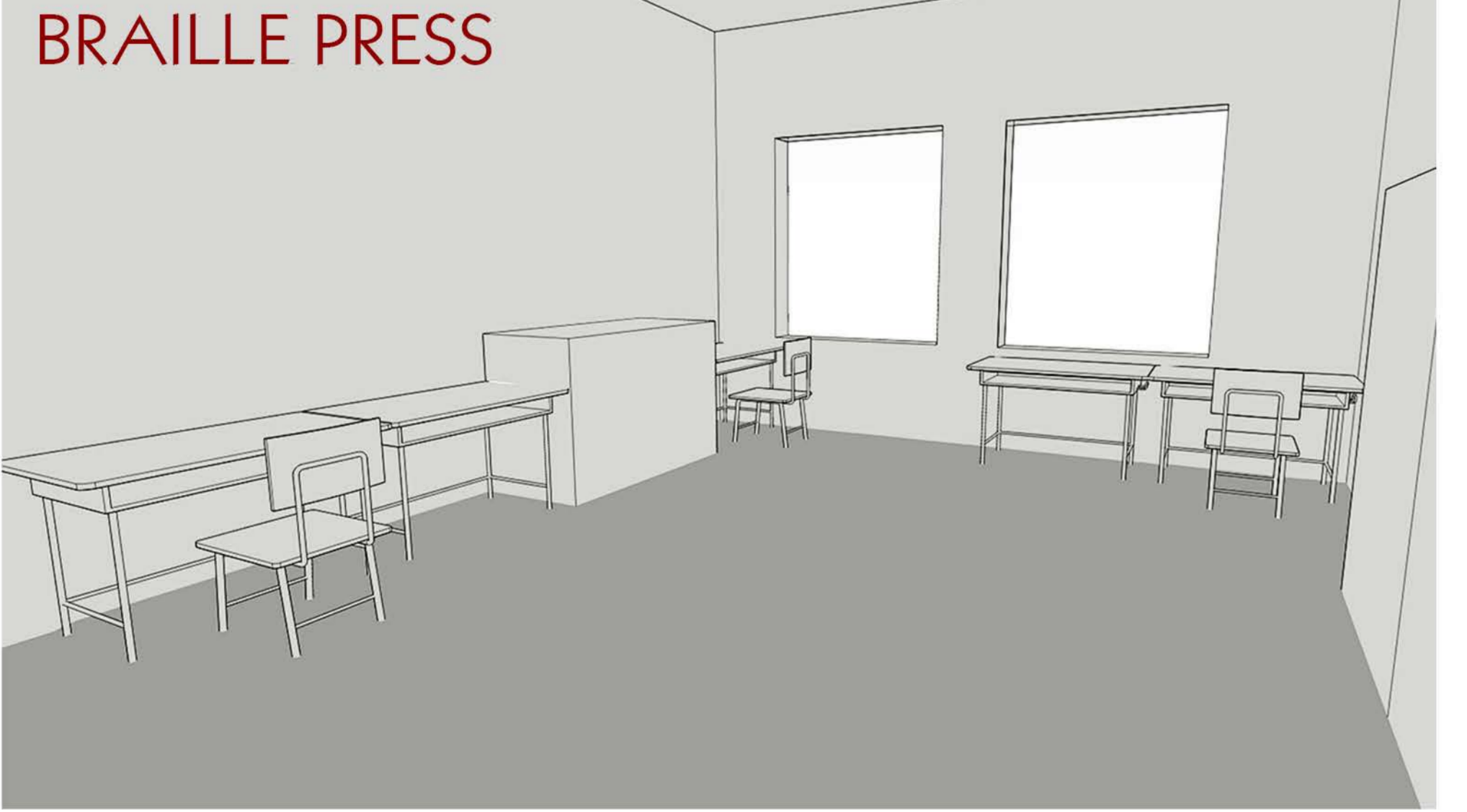
## CONCEPTION ROOM



## INTERIOR DESIGN FEATURES -



Braille Printer

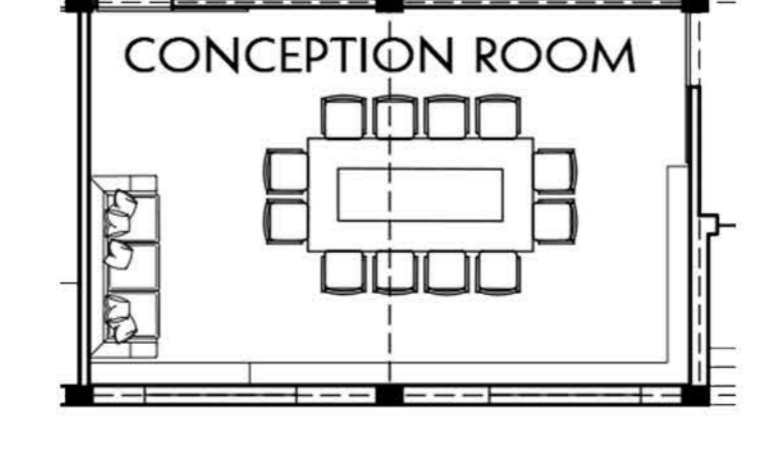


## BRAILLE PRESS

## BRAILLE LIBRARY

## CONCEPTION ROOM

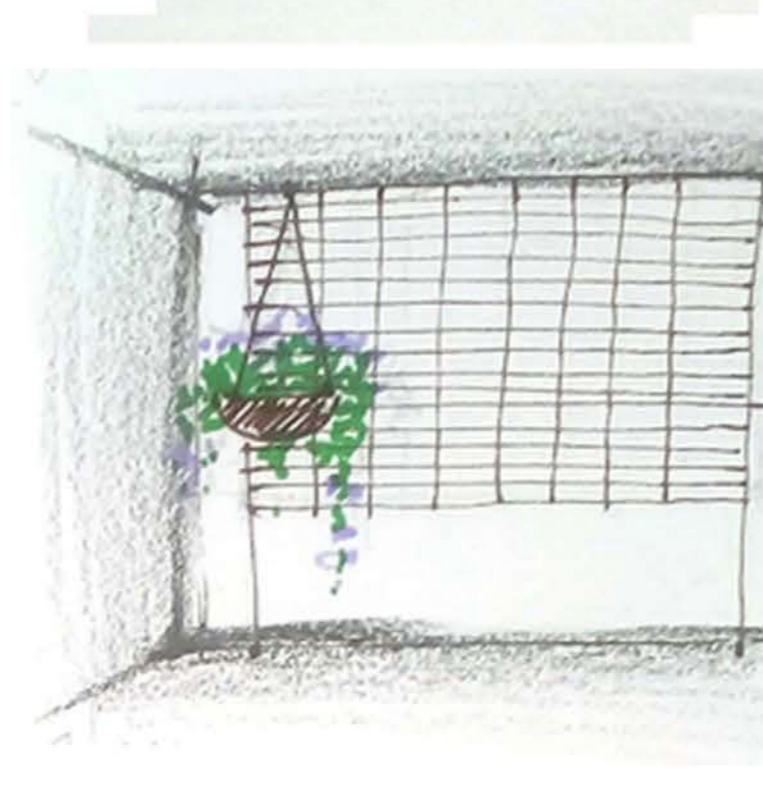
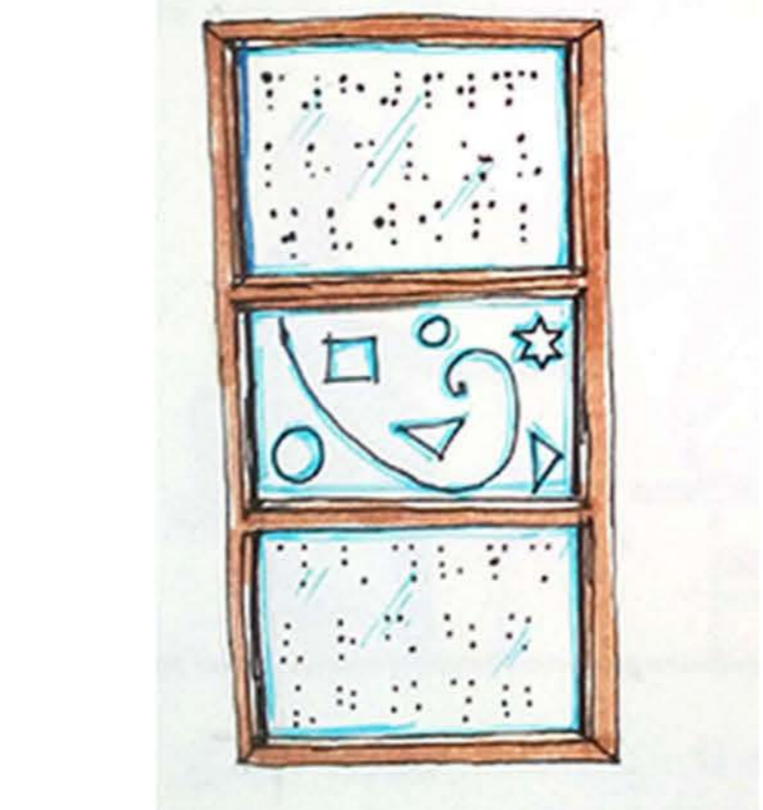
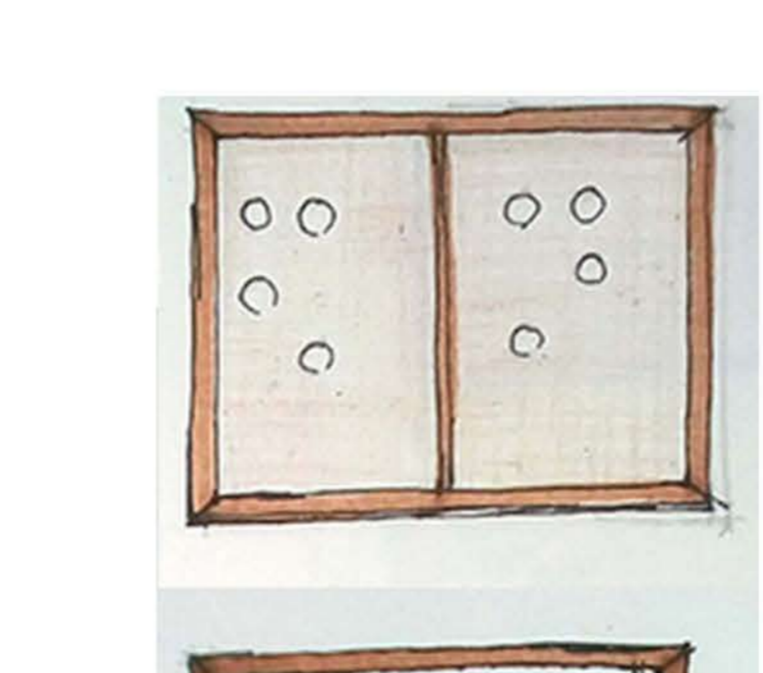
Scale 1:100



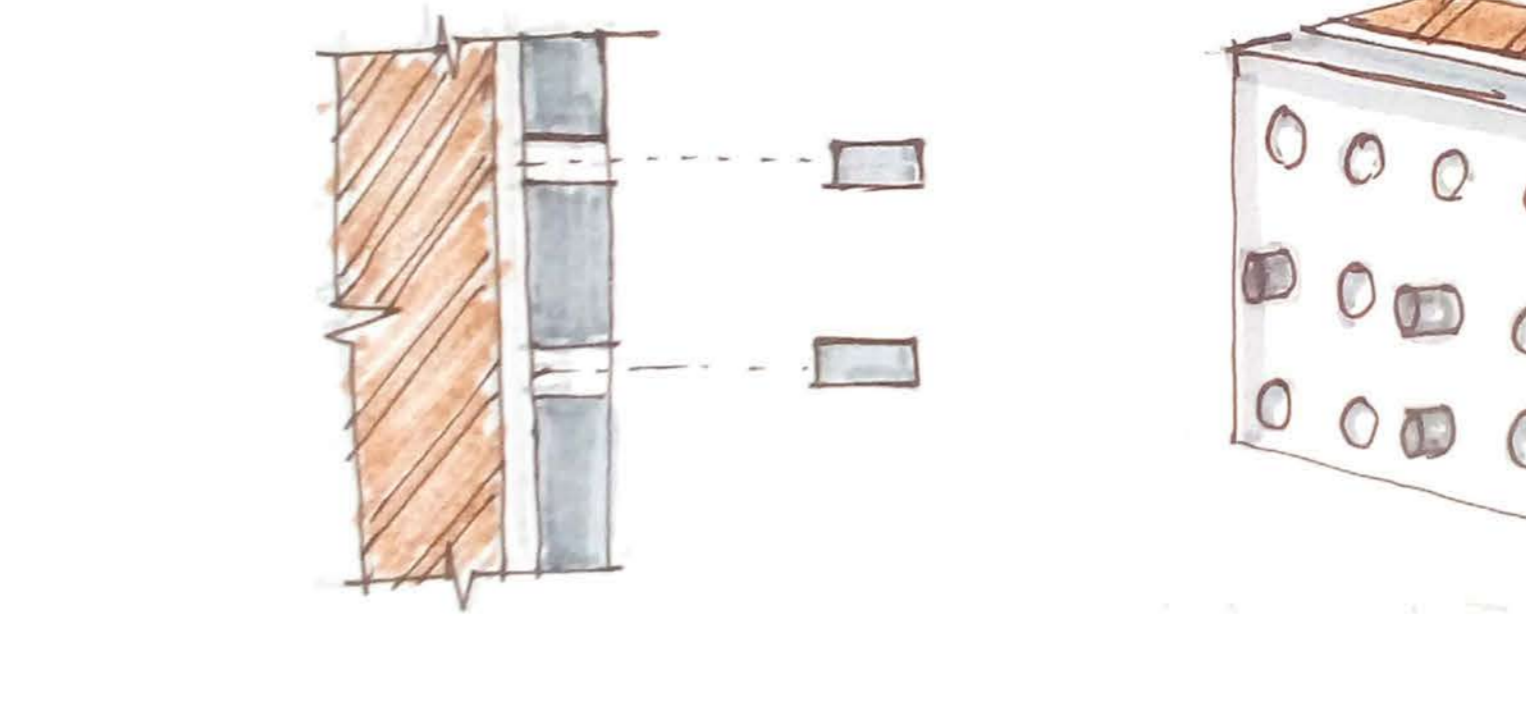
## CONCEPTION ROOM



## WINDOW TREATMENT



## CORRIDOR TREATMENT



## INTERACTIVE WALL DETAIL

